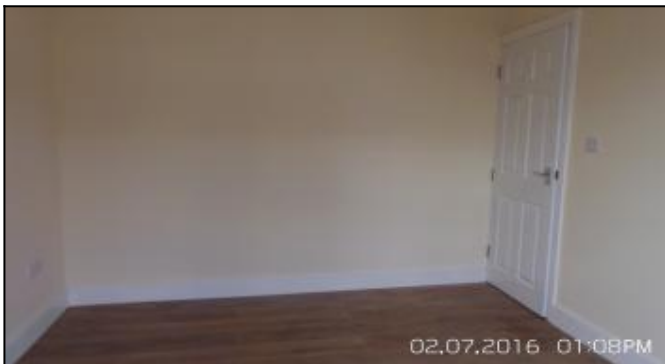




CITY LORD

E6 6AP, Gooseley Lane, London



### Property Features

- 4 Double Room
- Separate living room
- Double glazing window
- Central heating
- Fully furnished
- Spacious back garden
- Bathroom toilet downstairs
- Separate Shower and toilet upstairs
- Parking facility can be obtain from council
- Right next to bus stop



**Property Available from 10-07-2017**

**Rent: £ 390 / PW**

